



Passion
Passionate about improving educational outcomes

Wisdom
Using the evidence and wisdom of key thought leaders

Relationships
Building relationships to support educators

Dedication
Commitment and dedication to excellence in professional learning



Newsletter Number 6

We had an amazing term 2 supporting schools in either implementing or developing their knowledge and skills in Teach Like a Champion, Pedagogical Coaching, Leadership and Leading the Pedagogy throughout the school. We would like to thank all educators for everything you do.

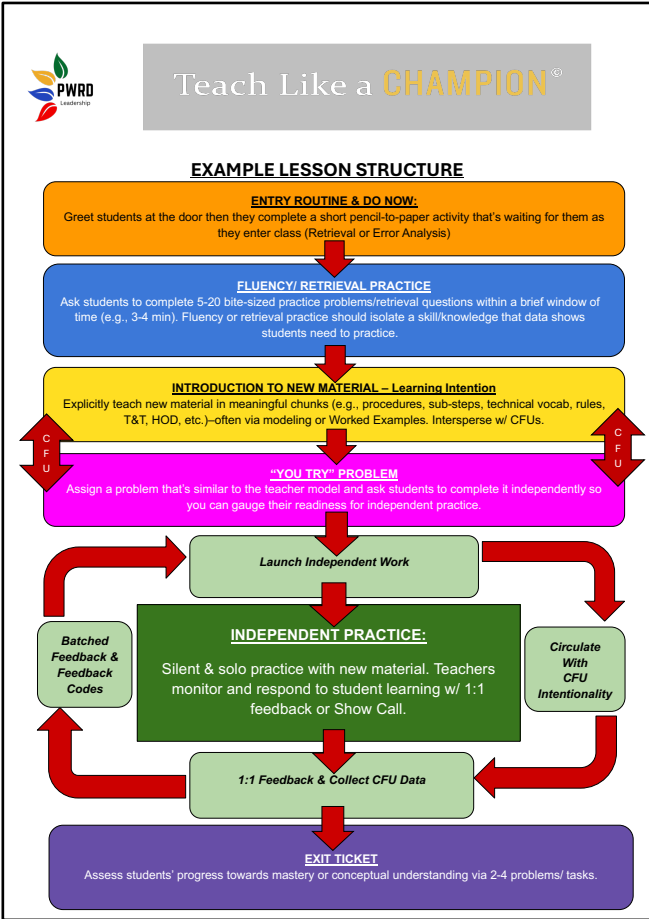
Quote of the Month

Teach Like a Champion participant - *I have loved the P.D. After 35 years of teaching I finally feel that we have concrete, data based, strategies. Feeling positive for the future.*

We have just released the Teach Like a Champion Lesson Structure (opposite page). You can also download the structure from the website. Please see the link below:
<https://www.pwrleadership.com.au/resources>

Lesson Structures are essential elements that I believe every school needs, these documents illustrate what great teaching looks like at your school. This document needs to have evidenced based Pedagogical practices that have granular action steps for what you would see a teacher and student do. This is completed through Double planning (Teacher will / Student will).

The best Lesson Structures that I have seen and been involved in their creation are the ones that have had all staff input when in the development phase.



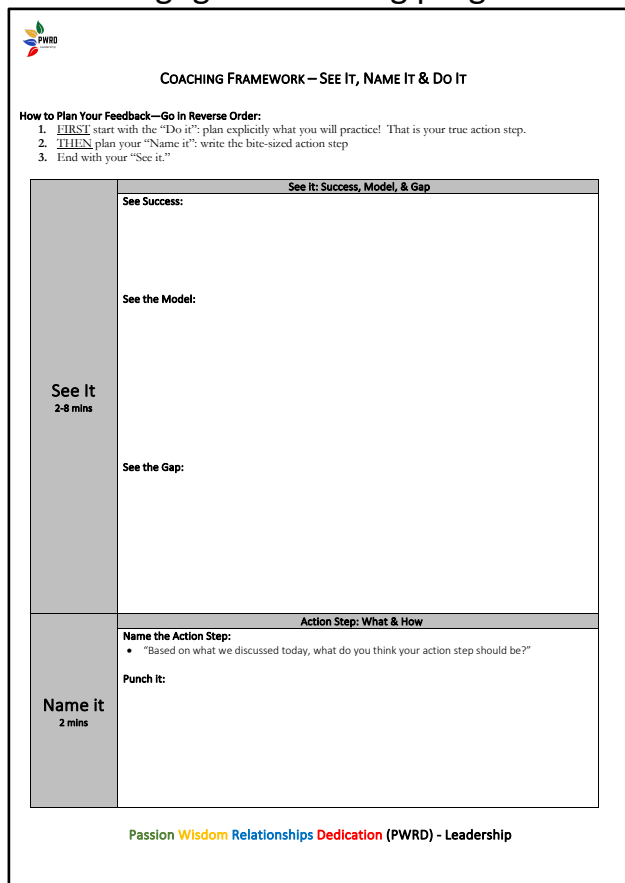
Alignment to Teach Like a Champion gives the miro-skills to implement the structure successfully. Our three key programs of Teach Like a Champion, Leading Pedagogical Learning and Pedagogical Coaching are all aligned to Developing, Implementing and Quality Assuring learning.

Additional information on lesson planning, preparation and structure can be found below on the Teach Like a Champion Blog by Doug Lemov. Link below.

<https://teachlikeachampion.org/blog/lesson-delivery-models-and-lesson-prep/>

Pedagogical Coaching Model

Our first Pedagogical Coaching program was a great success with an evaluation score of 5/5.

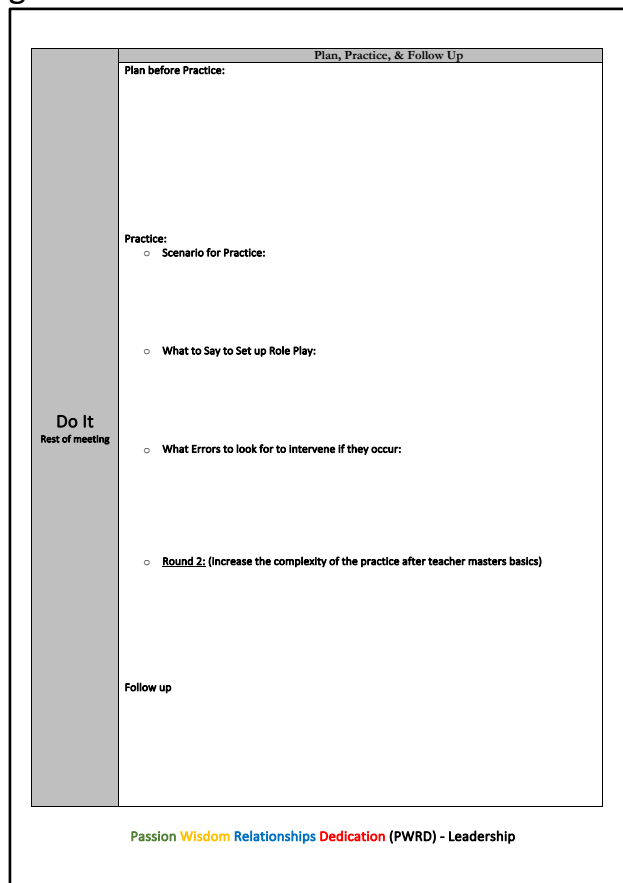


The template is titled "COACHING FRAMEWORK – SEE IT, NAME IT & DO IT" and includes the PWRD logo. It is divided into two main sections: "See It" and "Name it".

See It (2-8 mins): This section is titled "See It: Success, Model, & Gap". It contains three sub-sections: "See Success:", "See the Model:", and "See the Gap:". A vertical label on the left side of this section reads "See It 2-8 mins".

Name it (2 mins): This section is titled "Action Step: What & How". It contains two sub-sections: "Name the Action Step:" with a bullet point "Based on what we discussed today, what do you think your action step should be?" and "Punch it:". A vertical label on the left side of this section reads "Name it 2 mins".

At the bottom of the template, it reads "Passion Wisdom Relationships Dedication (PWRD) - Leadership".



The template is titled "Plan, Practice, & Follow Up" and includes the PWRD logo. It is divided into three main sections: "Plan before Practice:", "Practice:", and "Follow up".

Plan before Practice: This section is titled "Plan, Practice, & Follow Up". It contains a sub-section "Practice:" with a bullet point "Scenario for Practice:". A vertical label on the left side of this section reads "Do It Rest of meeting".

Practice: This section contains two bullet points: "What to Say to Set up Role Play:" and "What Errors to look for to intervene if they occur:". Below these is a sub-section "Round 2: (Increase the complexity of the practice after teacher masters basics)".

Follow up: This section is titled "Follow up".

At the bottom of the template, it reads "Passion Wisdom Relationships Dedication (PWRD) - Leadership".

The Pedagogical Coaching Framework above is the “See It, Name It and Do It” coaching process. It is aligned to the implementation of key school Pedagogical Frameworks, Lesson Structures or High Yield Teaching Strategies through the see the model phase. Intentional coaching is where all goals are aligned to the school teaching and learning structure. See link below to download document.

<https://www.pwrleadership.com.au/resources>

Our next workshop is on the 26th of August, please register through the website or the link at the bottom of the Newsletter.

Check for Understanding and Error Analysis

This year I have been working with a High School Maths Faculty on embedding the Teach Like a Champion techniques to a deep level. This has consisted of coaching, 4 one day workshops, prework and sharing of resources. I am proud of how the participants have embedded Teach Like a Champion throughout their lessons.

In this link <https://teachlikeachampion.org/blog/how-madi-b-puts-error-analysis-at-the-center-of-student-learning/> on Error Analysis, Check For Understanding and Feedback to Students. You will see Madi Bienvenu Maths classroom illustration why, legendary coach John Wooden put it, **“the most crucial task of teaching is knowing the difference between ‘I taught it’ and ‘they learned it.’”**

Research / Evidence

Recently I read a wonderful research paper from the Centre for Independent Studies on **“What is the Science of Learning”**. Link below to the reading below.

<https://www.cis.org.au/publication/what-is-the-science-of-learning/>

Resources

An excellent website you might like to explore is Evidence Informed - One Pager resources from Jamie Clark. This is an outstanding resource with one-page overviews for Formative Assessment, Learning, Memory and a lot more.

Please see the link below.

<https://www.jamieleeclark.com/graphics>

We have also added a lot of new resources to our website- www.pwrleadership.com.au

Teach Like a Champion – Network “FREE”

Our dates are set for Term 3 TLAC Network meetings. Please enrol through the website or replying to this email.

Our next meetings:

Term 3

- **22 July 3:30 – 4:30 (AEST)**
- **3 September 3:30 – 4:30 (AEST)**

Teach Like a Champion 3.0 books for sale \$37.50 (including GST) plus shipping

Please email cthomas@pwrleadership.com.au with your order.

Up Coming Programs

<u>29 July</u>	Teach Like a Champion - Melbourne https://www.pwrleadership.com.au/teach-like-a-champion-in-person
<u>16 August</u>	Teach Like a Champion - Brisbane https://www.pwrleadership.com.au/teach-like-a-champion-in-person
<u>26 August</u>	Pedagogical Coaching – Brisbane https://www.pwrleadership.com.au/pedagogical-leading-learning
<u>4 September</u>	Teach Like a Champion - Adelaide https://www.pwrleadership.com.au/teach-like-a-champion-in-person
<u>6 September</u>	Leading Pedagogical Learning - Brisbane https://www.pwrleadership.com.au/pedagogical-leading-learning
<u>16 September</u>	Teach Like a Champion - Sydney https://www.pwrleadership.com.au/teach-like-a-champion-in-person

We can customise and present any programs / workshops in your location.

Please let me know if you need any resources or have any queries.

Regards,



Christopher Thomas - Director

Phone: 0408 814 614

Email: cthomas@pwrleadership.com.au

Website: pwrleadership.com.au

Passion Wisdom Relationships Dedication – PWRD LEADERSHIP